



77  
BULLS ON  
OFFER

# Mountain Valley

*- Quality & Consistency -*

Poll Herefords ~ Angus ~ Suffolks ~ White Suffolks

**29th Annual Bull Sale**  
**Saturday 23rd July 2022 at 1pm**

Offering 43 Poll Hereford & 34 Angus Bulls

“Mountain Valley” Coolatai NSW

[www.mountainvalleystud.com.au](http://www.mountainvalleystud.com.au)





**Sire The Ranch Payroll DLRP031**



**Sire Injemira Techno IHSN276**

# Welcome to our 29th Annual Bull Sale

Boy oh boy have the last 12 months flown by. With record commodity prices and back-to-back brilliant seasons, agriculture and in particular beef has a real spring in its step which looks to be set to continue for some time.

This year's draft is again a mix of proven and new genetics. These bulls are the result of our drought joining's from Tasmania to Longreach and thankfully, most of the cows were back home to calve down at Mountain Valley.

We have stuck with our motto of "Quality and Consistency" in resisting upping our numbers in the current market and only offering our very best to you on the 23rd July.

Look forward to seeing you then.



*Left to Right: Stephen, Shelley, Matthew, Ian and Jorja*

For further information contact

Ian Durkin (02) 6729 9071 or 0427 299 012

CL Squires & Co. (02) 6722 2588 or (02) 6723 1211

[www.mountainvalleystud.com.au](http://www.mountainvalleystud.com.au)

# Sale Information

## Agents

C.L. Squires & Co

3/137 Byron Street, Inverell - Office - 02 6722 2588

Terry Pyne - 0447 231 411

Tom Oakes - 0409 901 930

Robbie Bloch - 0409 191 229

Phil Hurford - 0428 233 260

Will Claridge - 0428 236 930

Peter Squires - 0427 100 691



## Nutrien Stud Stock

John Settree - 0408 297 368 - Dubbo

Darren Smith - 0427 623 860 - Goondiwindi

Ashley Faint - 0427 700 028 - Inverell



**AuctionsPlus**<sup>®</sup>

*Australia's Livestock Marketplace*

## Auctioneer

Paul Dooley - 0458 662 646

## Settlement

C.L. Squires & Co will attend all settlement details.

## Inspection

Sale Lots will be available for inspection from 10am on sale day. Prior inspections welcome; contact vendor or the selling agents to arrange a time.



**HEREFORDS**  
Australia

## Insurance

We strongly recommend you insure any purchase. Representatives will be in attendance on sale day.

## GST

This sale is a GST exclusive sale, GST will be added to the purchase price.

## Disclaimer

The owners, employees, sale staff and representatives accept no liability for accidents that occur; although these are rare at cattle sales, any person attending does so at their own risk. While all care has been taken in preparation of the contents of this catalogue, Mountain Valley Poll Hereford stud principals accept no responsibility for any errors or omissions contained in this publication.

## Phone Bidding

Good mobile reception at sale venue. Contact selling agents prior to sale.



# Sale Information

## Refreshments

Refreshments will be available.

## Selling System & Buyers Registration

All lots will be sold subject to the usual terms and conditions governing auction sales. Intending purchasers should obtain a buyer's number and registration slip from the selling agents prior to the sale.

Sale will be interfaced using AuctionsPlus. Log onto AuctionsPlus to bid from anywhere using your phone, tablet or desktop. For more information contact AuctionsPlus on (02) 9262 4222 or **[www.auctionsplus.com.au](http://www.auctionsplus.com.au)**.

## Delivery

A delivery instruction slip must be filled out and handed to the selling agents. Local carriers will be in attendance. Delivery can take place at the completion of the sale.

## Fertility

All bulls have been semen tested by Brendan Coonan of Northern Artificial Breeders Scone.

## Herd Health

JBAS 6. 7 in 1 and Vibrio vaccinated.

## Sale Safety

All the sale bulls have been screened for temperament and are quiet to handle under normal circumstances. However, there are inherent risks associated with cattle handling. Visitors enter the cattle pens at their own risk. Children must not enter the yards. People entering the yards are at risk of injury. Be especially alert for bulls fighting and if one is playful with you, do not respond by patting his head. What a bull considers a playful nudge can break human legs!

We do not expect the bulls to be aggressive with humans, but sale day places extraordinary pressure on them as they experience an entirely foreign environment. Remember the quietest bull is in fact an unpredictable animal. Do not crowd the bulls or loiter inside the pens. We cannot cover every example of the dangers of cattle handling, so please use common sense and be alert at all times. Do not enter the pens unnecessarily. If you feel threatened whatsoever, please do not act hardy. The stigma of a person screaming as he dives over a fence is a preferable option to a broken body resulting from "standing up to" an unfamiliar beast. Please call upon any of the agents for an escort through the yards if required. The days of bravado with stock have passed under current OH&S legislation.

# Breedplan Explanation

BREEDPLAN is a performance valuation program that describes the genetic profile of bulls for a number of commercially important traits. This profile is given as an Estimated Breeding Value (EBV), expressed as a figure (+/-) relative to the breed benchmark of zero (0) for each trait.

The EBVs in this catalogue are Poll Hereford Group Breedplan EBVs and can be directly compared with Poll Hereford Group Breedplan EBVs from other herds. To evaluate the performance profile of a bull, its EBVs can be directly compared with the EBVs of other bulls, against the breed benchmark of zero (0) or against the current breed average EBV for each trait, which for the 2020 calving year was:

Poll Hereford Group Breedplan Average EBVs for 2020 Drop Calves								
CE DIR	CE DTRS	GEST	BWT	200	400	600	MCW	MILK
+2.5	+2.1	-0.7	+4.0	+33	+55	+78	+66	+17
SS	DTC	CWT	EMA	RIB	RUMP	RBV%	IMF%	DOC
+2.1	-3.0	+51	+3.8	+0.8	+1.0	+0.8	+0.6	+3

The shaded area on the EBV chart denotes the top 25%.

## EBVs are Provided for the Following Traits

**Birth Weight:** The lower the birthweight EBV, the lighter is the birthweight potential of the progeny.

**Genetic Milk:** Reflects extra calf weight at weaning due to the genetic influence a sire has on his daughters milking and mothering ability.

**200 Day Weight:** Indicates the relative weight advantage of a sire at 8–10 months of age.

**400 Day Weight:** Indicates the relative weight advantage of a sire at yearling age.

**600 Day Weight:** Indicates the relative weight advantage of a sire beyond yearling age. This EBV is important if selecting sires to breed steers for grained export markets.

**Fat Depth:** Bulls with negative (-) EBVs for this trait are expected to produce relatively leaner progeny than bulls with positive (+) EBVs.

**EMA:** Bulls with positive (+) EBVs for this trait are expected to produce more muscular progeny than will bulls with negative (-) EBVs.

**Accuracies** The accuracy provides a measure of the reliability of the EBV. The higher the value, the less likelihood of the EBV changing with the addition of more performance records on the animal.

**We cannot guarantee the accuracy or credibility as they are only an estimated breeding value not a guaranteed breeding value.**



# Rabobank



**Lot 2 Mountain Valley Roger R421 (AI) (ET) (PP)**



**Lot 5 Mountain Valley Saleo S004 (PP)**





**Lot 6 Mountain Valley Spotter S005 (PP)**



**Lot 7 Mountain Valley Randwick R133 (PP)**





**Lot 8 Mountain Valley Ringwood R403 (AI) (ET) (PP)**



**Lot 9 Mountain Valley Realist R107 (P)**



**Lot 11 Mountain Valley Racquet R026 (AI) (PP)**



**Lot 32 Mountain Valley Roper R404 (AI) (ET) (PP)**

# Lot 1 MOUNTAIN VALLEY QUATERBACK Q419 (AI) (ET) (PP)

Tattoo: Q419

Rego No: SBDQ419

Born: 06/06/2019

ALLEDALE WATERHOUSE D1 (PP)  
 DAYS ROBIN HOOD H38 (AI) (ET) (PP)  
 ALLEDALE FANCY U5 (AI) (P)

Sire: **HUNTER LAKES LION HEART L110 (AI) (ET) (PP)**  
 SOUTH BUKALONG WALLACE 2 (P)  
 HUNTER LAKES FANCY F7 (AI) (P)  
 ALLEDALE FANCY D24 (AI) (P)

OTAPAWA SKYMATE 2046 (IMP NZL) (ET) (P)  
 BRAYBOOK CHEROKEE C200 (AI) (P)  
 TYCOLAH DOMINETTE Y56 (P)

Purchaser: .....

Dam: **BOWEN HARMONY F27 (P)**  
 MONREID YALE (H)  
 BOWEN HARMONY B279 (H)  
 MONREID HARMONY T523 (H)

Price \$: .....

April 2022 Hereford BREEDPLAN														
GL	BW	200	400	600	MCW	Milk	SS	DC	Cwt	EMA	Rib	RUMP	RBY%	IMF%
-3.0	+5.9	+38	+60	+82	+75	+16	+1.9	-4.8	+52	+4.2	+1.4	+2.7	+0.2	+1.4
60%	68%	66%	66%	68%	62%	56%	66%	35%	58%	48%	55%	59%	50%	55%

**Traits Observed:** 400WT,SS,FAT,EMA,IMF,Genomics **Parent Verification:** Sire: Verified, Dam: Verified

**Notes:** Great opportunity to secure a genuine sire with pedigree performance and phenotype. Used within the stud extensively for the last two seasons, Q419 is a striking individual. He is a well balanced bull, thick topped and very deep. 3 ticks. Homozygous Polled. Eye Pigment: 100/100

# Lot 2 MOUNTAIN VALLEY ROGER R421 (AI) (ET) (PP)

Tattoo: R421

Rego No: SBDR421

Born: 14/07/2020

KOANUI UNANIMOUS 7174 (P)  
 KOANUI UNANIMOUS 0408 (P)  
 KOANUI GIRLIE 3048 (P)

Sire: **KOANUI TECHNO 3062 (IMP NZL) (PP)**  
 LEELANDS X-TENSION 293 (P)  
 KOANUI BLUSH 6455 (P)  
 KOANUI BLUSH 3304 (P)

MINLACOWIE VALIANT NICK (AI) (ET) (P)  
 MINLACOWIE XCITEMENT (P)  
 MINLACOWIE JOCELYN 202 (P)

Purchaser: .....

Dam: **MINLACOWIE NIKKI C77 (AI) (P)**  
 PALLABAH TOPLINE P12 (P)  
 MINLACOWIE NIKKI A08 (AI) (P)  
 MINLACOWIE NIKKIE V109 (AI) (ET) (P)

Price \$: .....

April 2022 Hereford BREEDPLAN														
GL	BW	200	400	600	MCW	Milk	SS	DC	Cwt	EMA	Rib	RUMP	RBY%	IMF%
+1.5	+6.7	+36	+66	+100	+97	+23	+3.1	-3.7	+60	+3.6	+0.9	+0.9	+0.8	+1.0
68%	73%	72%	72%	73%	68%	66%	71%	48%	66%	59%	63%	66%	59%	64%

**Traits Observed:** Genomics **Parent Verification:** Sire: Verified, Dam: Verified

**Notes:** A real world bull that we thought highly of here. We used him in the Stud as a yearling. Maternal brother to \$95k Minlacowie Jubilant and by breed leading Sire Koanui Techno. He's bred in the purple and looks every inch of it!! Homozygous Polled. Eye Pigment: 100/100



# Lot 3 MOUNTAIN VALLEY SANDGATE S006 (PP)

Tattoo: S006

Rego No: SBDS006

Born: 04/03/2021

KOANUI UNANIMOUS 0408 (P)

KOANUI TECHNO 3062 (IMP NZL) (PP)

KOANUI BLUSH 6455 (P)

Sire: **THE RANCH PAYROLL P031 (AI) (PP)**

HUNTER LAKES EXCELSIOR E26 (P)

GRASSY MOUNTAIN NOBLE GIRL 411 (P)

GRASSY MOUNTAIN NOBEL GIRL 062 (P)

BOWEN VINCENT V1 (S)

WYNELLA VINNIE J047 (AI) (P)

WYNELLA JEWELL E048 (AI) (ET) (P)

Dam: **MOUNTAIN VALLEY FAVOURITE M091 (AI) (ET) (P)**

MOUNTAIN VALLEY QUICKDRAW A18 (P)

MOUNTAIN VALLEY FAVOURITE F79 (P)

MOUNTAIN VALLEY FAVOURITE Y24 (P)

Purchaser: .....

Price \$: .....

April 2022 Hereford BREEDPLAN														
GL	BW	200	400	600	MCW	Milk	SS	DC	Cwt	EMA	Rib	RUMP	RBV%	IMF%
+1.1	+8.0	+44	+67	+94	+88	+19	+3.0	-3.7	+54	+3.9	+0.7	+1.1	+0.5	+0.5
56%	64%	62%	61%	62%	55%	49%	62%	33%	53%	43%	50%	54%	45%	51%

Traits Observed: Genomics Parent Verification: Sire: Verified, Dam: Not Tested

Notes: First of our Payroll Sons to be offered. If your looking to get abit of lift and stretch, here is your man! Out of a cow we rate in our top few with a picture perfect udder and loads of milk. Tremendous weight for age in the Payroll progeny. Homozygous Polled. Eye Pigment: 100/100

# Lot 4 MOUNTAIN VALLEY SALTY S010 (PP)

Tattoo: S010

Rego No: SBDS010

Born: 01/04/2021

KOANUI UNANIMOUS 0408 (P)

KOANUI TECHNO 3062 (IMP NZL) (PP)

KOANUI BLUSH 6455 (P)

Sire: **THE RANCH PAYROLL P031 (AI) (PP)**

HUNTER LAKES EXCELSIOR E26 (P)

GRASSY MOUNTAIN NOBLE GIRL 411 (P)

GRASSY MOUNTAIN NOBEL GIRL 062 (P)

BINBARRA WARBOYS (AI) (S)

MOUNTAIN VALLEY EXTRA E88 (P)

MOUNTAIN VALLEY PRUDENCE T27 (AI) (P)

Dam: **MOUNTAIN VALLEY MATCHLESS H21 (P)**

CANNAWIGRA HURRICANE Z31 (P)

MOUNTAIN VALLEY MATCHLESS E26 (P)

MOUNTAIN VALLEY MATCHLESS A23 (P)

Purchaser: .....

Price \$: .....

April 2022 Hereford BREEDPLAN														
GL	BW	200	400	600	MCW	Milk	SS	DC	Cwt	EMA	Rib	RUMP	RBV%	IMF%
+2.2	+8.2	+46	+74	+103	+103	+14	+2.9	-2.3	+62	+3.6	-0.5	-1.0	+1.4	+0.2
56%	64%	62%	62%	63%	56%	50%	62%	32%	54%	43%	50%	54%	45%	51%

Traits Observed: Genomics Parent Verification: Sire: Verified, Dam: Verified

Notes: I'm always drawn to this calf and when looking into his pedigree I can see why. Top cow family and a pedigree packed with no nonsense proper cattle. The outlook, strong bone and overall presence of this calf make him a bull to watch. I really rate him!! Homozygous Polled. Eye Pigment: 100/100

# Lot 5 MOUNTAIN VALLEY SALEO S004 (PP)

Tattoo: S004

Rego No: SBDS004

Born: 26/02/2021

KOANUI UNANIMOUS 0408 (P)  
 KOANUI TECHNO 3062 (IMP NZL) (PP)  
 KOANUI BLUSH 6455 (P)

Sire: **THE RANCH PAYROLL P031 (AI) (PP)**  
 HUNTER LAKES EXCELSIOR E26 (P)  
 GRASSY MOUNTAIN NOBLE GIRL 411 (P)  
 GRASSY MOUNTAIN NOBEL GIRL 062 (P)

ALLEDALE WATERHOUSE D1 (PP)  
 ALLEDALE DISTINGUISHED H52 (AI) (PP)  
 ALLEDALE MARSHALL LASS E116 (P)

Purchaser: .....

Dam: **MOUNTAIN VALLEY LADY L16 (P)**

TYCOLAH EXECUTIVE (P)  
 MOUNTAIN VALLEY LADY F14 (P)  
 MOUNTAIN VALLEY LADY C20 (AI) (P)

Price \$: .....

April 2022 Hereford BREEDPLAN														
GL	BW	200	400	600	MCW	Milk	SS	DC	Cwt	EMA	Rib	RUMP	RBY%	IMF%
-1.0	+8.8	+45	+72	+102	+106	+14	+3.3	-2.5	+56	+2.9	+0.0	+0.2	+0.4	+0.3
56%	62%	61%	61%	63%	55%	47%	60%	32%	53%	43%	50%	54%	46%	51%

**Traits Observed:** Genomics **Parent Verification:** Sire: Verified, Dam: Not Tested

**Notes:** A soft, quality fella and a good style of bull with it. Upstanding young sire out of a big volume cow. Can't beat the performance and temperament of the Payrolls. Homozygous Polled. Eye Pigment: 100/100

# Lot 6 MOUNTAIN VALLEY SPOTTER S005 (PP)

Tattoo: S005

Rego No: SBDS005

Born: 27/02/2021

KOANUI UNANIMOUS 0408 (P)  
 KOANUI TECHNO 3062 (IMP NZL) (PP)  
 KOANUI BLUSH 6455 (P)

Sire: **THE RANCH PAYROLL P031 (AI) (PP)**  
 HUNTER LAKES EXCELSIOR E26 (P)  
 GRASSY MOUNTAIN NOBLE GIRL 411 (P)  
 GRASSY MOUNTAIN NOBEL GIRL 062 (P)

CANNAWIGRA S5 BATMAN X08 (AI) (ET) (S)  
 CANNAWIGRA COMMANDER Z51 (S)  
 CANNAWIGRA ANABEL V108 (P)

Purchaser: .....

Dam: **MOUNTAIN VALLEY COLLINA G84 (P)**

WIRANYA CARDINAL 2 (AI) (P)  
 MOUNTAIN VALLEY COLLINA W13 (P)  
 MOUNTAIN VALLEY COLLINA T12 (P)

Price \$: .....

April 2022 Hereford BREEDPLAN														
GL	BW	200	400	600	MCW	Milk	SS	DC	Cwt	EMA	Rib	RUMP	RBY%	IMF%
-1.2	+6.4	+41	+62	+86	+77	+21	+2.0	-2.4	+56	+3.8	+0.5	+0.7	+0.7	+0.5
57%	65%	63%	62%	64%	57%	53%	63%	35%	55%	45%	52%	55%	47%	53%

**Traits Observed:** Genomics **Parent Verification:** Sire: Verified, Dam: Verified

**Notes:** Not often we see a carcass on a young sire like this!! He has as good a skin as you can get on a bull. Out of a donor cow that just pumps the good ones out. There is a lot to like about this calf and we rate him highly. One that's really worth a road trip for! Maternal brother sold to G & D Easy for \$18,000 in 2021 and another is at stud in Vic at Valley Vista Herefords. Homozygous Polled. Eye Pigment: 100/100

# Lot 7 MOUNTAIN VALLEY RANDWICK R133 (PP)

Tattoo: R133

Rego No: SBDR133

Born: 03/08/2020

CASCADE EL DORADO E27 (P)  
 CASCADE HOCUS POCUS H145 (P)  
 CASCADE ADELAIDE Z167 (P)

Sire: **BOBANKEN KONRAD K13 (PP)**  
 LLANDILLO WARIALOA E152 (P)  
 BOBANKEN GLITTER H10 (P)  
 BOBANKEN GLITTER E05 (P)

VALMA ODYSSEY (PP)  
 YAVENVALE GUARDSMAN G471 (AI) (P)  
 YAVENVALE DUCHESS D127 (AI) (P)

Dam: **MOUNTAIN VALLEY PAGON K130 (AI) (ET) (P)**  
 BOBANKEN WARRIGAL W175 (P)  
 MOUNTAIN VALLEY PAGON Z40 (P)  
 MOUNTAIN VALLEY PAGON W30 (P)

Purchaser: .....

Price \$: .....

April 2022 Hereford BREEDPLAN														
GL	BW	200	400	600	MCW	Milk	SS	DC	Cwt	EMA	Rib	RUMP	RBY%	IMF%
-2.8	+3.7	+34	+63	+89	+88	+18	+1.2	-0.4	+62	+4.1	+0.3	+0.3	+0.4	+1.3
52%	65%	62%	61%	62%	55%	48%	61%	28%	51%	40%	47%	51%	43%	48%

**Traits Observed:** Genomics **Parent Verification:** Sire: Verified, Dam: Not Tested

**Notes:** R133 embodies just about everything we try to put in a Sire. A powerful head, broad muzzle. He's got power and strength in both phenotype and pedigree. We rate his mum in the very top few we have raised. R133 is the REAL DEAL! Outstanding Sire Prospect!! Homozygous Polled. Eye Pigment: 100/100.

# Lot 8 MOUNTAIN VALLEY RINGWOOD R403 (AI) (ET) (PP)

Tattoo: R403

Rego No: SBDR403

Born: 30/08/2020

KOANUI UNANIMOUS 0408 (P)  
 KOANUI TECHNO 3062 (IMP NZL) (PP)  
 KOANUI BLUSH 6455 (P)

Sire: **INJEMIRA TECHNO N276 (AI) (PP)**  
 ALLENDALE ANZAC E114 (PP)  
 INJEMIRA PRUDENCE AI J182 (AI) (P)  
 INJEMIRA PRUDENCE F009 T (TW) (P)

MERAWAH FRONT PAGE C46 (PP)  
 MERAWAH FRONT PAGE F66 (P)  
 MERAWAH SHAMROCK B34 (AI) (ET) (P)

Dam: **SEVENBARDOT CUPID K361 (PP)**  
 SEVENBARDOT SPEED C66 (P)  
 SEVENBARDOT CUPID F327 (P)  
 SEVENBARDOT CUPID Z187 (P)

Purchaser: .....

Price \$: .....

April 2022 Hereford BREEDPLAN														
GL	BW	200	400	600	MCW	Milk	SS	DC	Cwt	EMA	Rib	RUMP	RBY%	IMF%
-0.9	+7.0	+41	+69	+95	+97	+24	+2.3	-2.3	+57	+2.9	-0.3	-0.9	+0.8	+0.4
60%	66%	64%	64%	66%	58%	48%	63%	34%	56%	45%	52%	56%	48%	54%

**Traits Observed:** Genomics **Parent Verification:** Sire: Verified, Dam: Verified

**Notes:** A standout sire that oozes quality with balance and style to burn. R403 is a genuine sire prospect. We think a lot of this bull. Homozygous Polled. Eye Pigment: 100/100



# Lot 9 MOUNTAIN VALLEY REALIST R107 (P)

Tattoo: R107

Rego No: SBDR107

Born: 20/09/2020

ALLENDALE ANZAC E114 (PP)

INJEMIRA ANZAC H006 (PP)

INJEMIRA MARINDA B028 (AI) (P)

Sire: **INJEMIRA ANZAC H006 M187 AI (AI) (PP)**

DEBARRY RUGGERO (S)

INJEMIRA PLUM E212 (P)

BURANDO Y2 PLUM 39 (P)

DAYS CALIBRE G74 (PP)

Purchaser: .....

BOWEN CALIBRE K68 (S)

BOWEN HARMONY F27 (P)

Dam: **MOUNTAIN VALLEY BONNIE P315 (AI) (ET) (P)**

MERAWAH EXPRESS A84 (P)

Price \$: .....

MERAWAH BONNIE D162 (AI) (ET) (P)

MERAWAH BONNIE X167 (P)

April 2022 Hereford BREEDPLAN														
GL	BW	200	400	600	MCW	Milk	SS	DC	Cwt	EMA	Rib	RUMP	RBY%	IMF%
-3.0	+7.0	+43	+73	+101	+106	+19	+1.6	-2.8	+68	+6.7	+0.2	+0.0	+2.7	+0.0
58%	65%	63%	63%	64%	57%	51%	64%	33%	55%	44%	51%	55%	47%	53%

**Traits Observed:** Genomics **Parent Verification:** Sire: Verified, Dam: Not Tested

**Notes:** Proper beef bull! Only a youngster, R107 is 5 star quality. A heifers first calf that has dazzled since day one! Comes with our highest recommendation!! Eye Pigment: 100/100

# Lot 10 COMMERCIAL R216

Tattoo: SBDR216

Rego No: NOT REGISTERED

Born: October 2021

ALLENDALE ANZAC E114 (PP)

INJEMIRA ANZAC H006 (PP)

INJEMIRA MARINDA B028 (AI) (P)

Sire: **INJEMIRA ANZAC H006 M187 AI (AI) (PP)**

DEBARRY RUGGERO (S)

INJEMIRA PLUM E212 (P)

BURANDO Y2 PLUM 39 (P)

Purchaser: .....

Price \$: .....

**Notes:** A heifers first calf that has really gone on. Typical son of M187 who stamps his progeny with excellent carcass attributes combined with flawless structure wrapped in that skin and hair we talk about here at Mountain Valley. Don't miss this one. Eye Pigment: 100/100

# Lot 11 MOUNTAIN VALLEY RACQUET R026 (AI) (PP)

Tattoo: R026

Rego No: SBDR026

Born: 22/07/2020

STUDBROOK D'ARTAGNION V086 (AI) (ET) (S)  
OTAPAWA SPARK 3060 (IMP NZL) (AI) (ET) (P)  
OTAPAWA SPOT P30 (P)

Sire: MAILDABURRA JARRAH J2 (AI) (TW) (PP)

DEBARRY EDEN (PP)  
MAILDABURRA PURITY C2 (AI) (P)  
MAILDABURRA PURITY V59 (P)

CANNAWIGRA S5 BATMAN X08 (AI) (ET) (S)  
CANNAWIGRA COMMANDER Z51 (S)  
CANNAWIGRA ANABEL V108 (P)

Purchaser: .....

Dam: MOUNTAIN VALLEY SHAMROCK M074 (P)

BOBANKEN X-MARK X157 (P)  
MOUNTAIN VALLEY SHAMROCK D60 (P)  
MOUNTAIN VALLEY SHAMROCK Z53 (P)

Price \$: .....

April 2022 Hereford BREEDPLAN														
GL	BW	200	400	600	MCW	Milk	SS	DC	Cwt	EMA	Rib	RUMP	RBV%	IMF%
-1.9	+3.2	+34	+56	+77	+70	+18	+0.6	-1.6	+60	+4.9	+0.8	+0.9	+0.8	+0.8
59%	69%	67%	66%	67%	60%	59%	65%	39%	59%	50%	55%	59%	51%	57%

Traits Observed: Genomics Parent Verification: Sire: Verified, Dam: Not Tested

Notes: Maternal brother to last years \$30,000 top price bull that sold to Glenwarrah. The first of our Jarrah J2 calves and he's a beauty! Soft, slick skinned with substance. An easy doing type with depth and volume. Homozygous Polled. Eye Pigment: 100/100

# Lot 12 MOUNTAIN VALLEY RICKETTY R009 (P)

Tattoo: R009

Rego No: SBDR009

Born: 01/07/2020

STUDBROOK D'ARTAGNION V086 (AI) (ET) (S)  
OTAPAWA SPARK 3060 (IMP NZL) (AI) (ET) (P)  
OTAPAWA SPOT P30 (P)

Sire: MAILDABURRA JARRAH J2 (AI) (TW) (PP)

DEBARRY EDEN (PP)  
MAILDABURRA PURITY C2 (AI) (P)  
MAILDABURRA PURITY V59 (P)

ALLENDALE WATERHOUSE D1 (PP)  
ALLENDALE DISTINGUISHED H52 (AI) (PP)  
ALLENDALE MARSHALL LASS E116 (P)

Purchaser: .....

Dam: MOUNTAIN VALLEY ADVANCE M105 (P)

MARKOWEN PINNACLE D23 (AI) (ET) (P)  
MOUNTAIN VALLEY ADVANCE G2 (P)  
MOUNTAIN VALLEY ADVANCE D64 (P)

Price \$: .....

Hereford Mating Predictor based EBVs														
GL	BW	200	400	600	MCW	Milk	SS	DC	Cwt	EMA	Rib	RUMP	RBV%	IMF%
-2.4	+4.2	+33	+56	+81	+76	+14	+2.0	-3.6	+54	+4.5	+1.2	+1.6	+0.3	+1.1

Traits Observed: Parent Verification: Sire: Not Tested, Dam: Not Tested

Notes: A very neat and correct type. Lovely skin and hair. A super easy doing bull. Eye Pigment: 100/100

# Lot 13 MOUNTAIN VALLEY ROLLY R096 (PP)

Tattoo: R096

Rego No: SBDR096

Born: 02/09/2020

JB 531 BRAXTON CAL 605U (P)  
HILLS-GALORE ENTERPRISE 20C (IMP CAN) (PP)  
HILLS-GALORE 105P STAR 95W (P)

Sire: **MOUNTAIN VALLEY PHANTOM P312 (AI) (ET) (PP)**

TYCOLAH EXECUTIVE (P)  
MOUNTAIN VALLEY VICTORIA F17 (P)  
MOUNTAIN VALLEY VICTORIA C45 (P)

CANNAWIGRA COMMANDER Z51 (S)  
MOUNTAIN VALLEY GAMBLER G14 (P)  
MOUNTAIN VALLEY B44 (P)

Dam: **MOUNTAIN VALLEY GLITTER M0451 (P)**

CASCADE ZIRCON Z07 (PP)  
MOUNTAIN VALLEY GLITTER D67 (P)  
MOUNTAIN VALLEY GLITTER V62 (P)

Purchaser: .....

Price \$: .....

April 2022 Hereford BREEDPLAN														
GL	BW	200	400	600	MCW	Milk	SS	DC	Cwt	EMA	Rib	RUMP	RBY%	IMF%
+1.5	+6.8	+36	+66	+96	+96	+8	+2.0	-1.5	+57	+4.9	-0.1	-0.3	+1.6	+0.1
53%	64%	62%	61%	62%	55%	52%	62%	30%	53%	43%	49%	53%	45%	50%

Traits Observed: Genomics Parent Verification: Sire: Verified, Dam: Not Tested

Notes: Strength, muscle, bone, volume. A really good bull. One of my favourites. Homozygous Polled. Eye Pigment: 100/100

# Lot 14 MOUNTAIN VALLEY REALIST R413 (AI) (ET) (P)

Tattoo: R413

Rego No: SBDR413

Born: 10/07/2020

ALLENDALE WATERHOUSE D1 (PP)  
DAYS ROBIN HOOD H38 (AI) (ET) (PP)  
ALLENDALE FANCY U5 (AI) (P)

Sire: **HUNTER LAKES LION HEART L110 (AI) (ET) (PP)**

SOUTH BUKALONG WALLACE 2 (P)  
HUNTER LAKES FANCY F7 (AI) (P)  
ALLENDALE FANCY D24 (AI) (P)

OTAPAWA SKYMATE 2046 (IMP NZL) (ET) (P)  
BRAYBOOK CHEROKEE C200 (AI) (P)  
TYCOLAH DOMINETTE Y56 (P)

Dam: **BOWEN HARMONY F27 (P)**

MONREID YALE (H)  
BOWEN HARMONY B279 (H)  
MONREID HARMONY T523 (H)

Purchaser: .....

Price \$: .....

April 2022 Hereford BREEDPLAN														
GL	BW	200	400	600	MCW	Milk	SS	DC	Cwt	EMA	Rib	RUMP	RBY%	IMF%
-3.1	+5.4	+31	+50	+68	+67	+13	+2.0	-3.8	+40	+5.1	+1.0	+2.0	+1.3	+0.7
59%	68%	66%	65%	67%	61%	56%	63%	35%	58%	47%	54%	58%	50%	54%

Traits Observed: Genomics Parent Verification: Sire: Verified, Dam: Verified

Notes: Full brother to Lot 1. A correct, upstanding type. Great head and jaw. Thick topped and mobile. Eye Pigment: 100/100



# Lot 15 MOUNTAIN VALLEY ROMA R407 (AI) (ET) (PP)

Tattoo: R407

Rego No: SBDR407

Born: 06/09/2020

STUDBROOK D'ARTAGNION V086 (AI) (ET) (S)  
OTAPAWA SPARK 3060 (IMP NZL) (AI) (ET) (P)  
OTAPAWA SPOT P30 (P)

Sire: MAILDABURRA JARRAH J2 (AI) (TW) (PP)

DEBARRY EDEN (PP)  
MAILDABURRA PURITY C2 (AI) (P)  
MAILDABURRA PURITY V59 (P)

MERAWAH FRONT PAGE C46 (PP)  
MERAWAH FRONT PAGE F66 (P)  
MERAWAH SHAMROCK B34 (AI) (ET) (P)

Dam: SEVENBARDOT CUPID K361 (PP)

SEVENBARDOT SPEED C66 (P)  
SEVENBARDOT CUPID F327 (P)  
SEVENBARDOT CUPID Z187 (P)

Purchaser: .....

Price \$: .....

April 2022 Hereford BREEDPLAN														
GL	BW	200	400	600	MCW	Milk	SS	DC	Cwt	EMA	Rib	RUMP	RBY%	IMF%
-1.5	+7.0	+40	+62	+93	+92	+16	+1.6	-2.3	+57	+3.0	-0.4	-1.0	+1.0	+0.2
58%	67%	66%	66%	66%	59%	56%	64%	37%	57%	47%	54%	58%	50%	56%

Traits Observed: Genomics Parent Verification: Sire: Verified, Dam: Verified

Notes: Probably our pick Jarrah bull. Great skin and tremendous length from head to tail. R407 is hard to fault. A really complete bull. Homozygous Polled. Eye Pigment: 100/100

# Lot 16 MOUNTAIN VALLEY RUDE R422 (AI) (ET) (PP)

Tattoo: R422

Rego No: SBDR422

Born: 22/08/2020

STUDBROOK D'ARTAGNION V086 (AI) (ET) (S)  
OTAPAWA SPARK 3060 (IMP NZL) (AI) (ET) (P)  
OTAPAWA SPOT P30 (P)

Sire: MAILDABURRA JARRAH J2 (AI) (TW) (PP)

DEBARRY EDEN (PP)  
MAILDABURRA PURITY C2 (AI) (P)  
MAILDABURRA PURITY V59 (P)

MERAWAH FRONT PAGE C46 (PP)  
MERAWAH FRONT PAGE F66 (P)  
MERAWAH SHAMROCK B34 (AI) (ET) (P)

Dam: SEVENBARDOT CUPID K361 (PP)

SEVENBARDOT SPEED C66 (P)  
SEVENBARDOT CUPID F327 (P)  
SEVENBARDOT CUPID Z187 (P)

Purchaser: .....

Price \$: .....

April 2022 Hereford BREEDPLAN														
GL	BW	200	400	600	MCW	Milk	SS	DC	Cwt	EMA	Rib	RUMP	RBY%	IMF%
-2.0	+6.2	+40	+66	+95	+80	+20	+2.0	-2.2	+59	+3.5	+0.0	-0.5	+0.9	+0.5
59%	67%	66%	66%	66%	60%	56%	64%	37%	58%	47%	54%	58%	50%	56%

Traits Observed: Genomics Parent Verification: Sire: Verified, Dam: Verified

Notes: There is a lot to like about the Jarrah progeny. Bulls are smooth, correct and attractive with shape. Females are standouts in their group. Homozygous Polled. Eye Pigment: 100/100

# Lot 17 MOUNTAIN VALLEY REACT R411 (AI) (ET) (PP)

Tattoo: R411

Rego No: SBDR411

Born: 03/09/2020

STUDBROOK D'ARTAGNION V086 (AI) (ET) (S)  
 OTAPAWA SPARK 3060 (IMP NZL) (AI) (ET) (P)  
 OTAPAWA SPOT P30 (P)

Sire: **MAILDABURRA JARRAH J2 (AI) (TW) (PP)**

DEBARRY EDEN (PP)  
 MAILDABURRA PURITY C2 (AI) (P)  
 MAILDABURRA PURITY V59 (P)

MERAWAH FRONT PAGE C46 (PP)  
 MERAWAH FRONT PAGE F66 (P)  
 MERAWAH SHAMROCK B34 (AI) (ET) (P)

Dam: **SEVENBARDOT CUPID K361 (PP)**

SEVENBARDOT SPEED C66 (P)  
 SEVENBARDOT CUPID F327 (P)  
 SEVENBARDOT CUPID Z187 (P)

Purchaser: .....

Price \$: .....

April 2022 Hereford BREEDPLAN														
GL	BW	200	400	600	MCW	Milk	SS	DC	Cwt	EMA	Rib	RUMP	RBY%	IMF%
-2.6	+5.1	+38	+60	+84	+81	+20	+1.7	-2.6	+54	+2.4	+0.2	-0.2	+0.5	-0.3
58%	67%	66%	66%	66%	59%	56%	63%	37%	57%	47%	54%	58%	50%	56%

Traits Observed: Genomics Parent Verification: Sire: Verified, Dam: Verified

Notes: Solid J2 son. Good footed and very quiet. Good growth and length and big where it counts. Homozygous Polled. Eye Pigment: 100/100

# Lot 18 MOUNTAIN VALLEY RHUBARB R042 (P)

Tattoo: R042

Rego No: SBDR042

Born: 06/08/2020

ALLENDALE ROBIN HOOD Y169 (P)  
 ALLENDALE WATERLOO B50 (AI) (P)  
 ALLENDALE FANCY Z35 (AI) (P)

Sire: **MOUNTAIN VALLEY PREMIUM P335 (AI) (ET) (PP)**

MINLACOWIE XCITEMENT (P)  
 MINLACOWIE NIKKI C77 (AI) (P)  
 MINLACOWIE NIKKI A08 (AI) (P)

CANNAWIGRA COMMANDER Z51 (S)  
 MOUNTAIN VALLEY GAMBLER G14 (P)  
 MOUNTAIN VALLEY B44 (P)

Dam: **MOUNTAIN VALLEY MATFLOWER L27 (P)**

KANIMBLA JACKPOT E91 (P)  
 MOUNTAIN VALLEY MAYFLOWER H118 (P)  
 MOUNTAIN VALLEY MAYFLOWER C34 (TW) (P)

Purchaser: .....

Price \$: .....

Hereford Mating Predictor based EBVs														
GL	BW	200	400	600	MCW	Milk	SS	DC	Cwt	EMA	Rib	RUMP	RBY%	IMF%
+1.2	+4.9	+31	+52	+79	+76	+17	+1.8	-2.6	+48	+3.8	+0.3	+0.7	+1.1	+0.1

Traits Observed: Parent Verification: Sire: Not Tested, Dam: Not Tested

Notes: A long, smooth type calf with a strong head. Plenty to like here! Eye Pigment: 100/100

# Lot 19 MOUNTAIN VALLEY RAMJET R066 (P)

Tattoo: R066

Rego No: SBDR066

Born: 21/08/2020

KIDMAN DICTATOR F115 (P)  
 KIDMAN ADVANCER J312 (PP)  
 KIDMAN ADVANCE B221 (AI) (P)

Sire: **CASCADE MAXI CDEM071 (P)**  
 CASCADE EL DORADO E27 (P)  
 CASCADE PETUNIA G202 (P)  
 DEBARRY PETUNIA B216 (P)

CANNAWIGRA COMMANDER Z51 (S)  
 MOUNTAIN VALLEY GAMBLER G14 (P)  
 MOUNTAIN VALLEY B44 (P)

Purchaser: .....

Dam: **MOUNTAIN VALLEY PAGON J62 (P)**  
 MOUNTAIN VALLEY QUICKSTIX A71 (P)  
 MOUNTAIN VALLEY PAGON D58 (P)  
 MOUNTAIN VALLEY PAGON Z40 (P)

Price \$: .....

April 2022 Hereford BREEDPLAN														
GL	BW	200	400	600	MCW	Milk	SS	DC	Cwt	EMA	Rib	RUMP	RBY%	IMF%
-0.7	+5.2	+33	+52	+76	+76	+12	+0.4	+0.1	+47	+4.2	+0.1	+0.4	+1.0	+0.8
53%	65%	62%	62%	63%	56%	49%	63%	30%	53%	44%	50%	54%	46%	50%

Traits Observed: Genomics Parent Verification: Sire: Verified, Dam: Not Tested

Notes: Google eyed, attractive bull. Moves well, great cosmetics! Eye Pigment: 100/100

# Lot 20 MOUNTAIN VALLEY ROUSTABOUT R030T (TW) (P)

Tattoo: R030

Rego No: SBDR030

Born: 22/07/2020

ALLENDALÉ ROBIN HOOD Y169 (P)  
 ALLENDALÉ WATERLOO B50 (AI) (P)  
 ALLENDALÉ FANCY Z35 (AI) (P)

Sire: **MOUNTAIN VALLEY PREMIUM P335 (AI) (ET) (PP)**  
 MINLACOWIE XCITEMENT (P)  
 MINLACOWIE NIKKI C77 (AI) (P)  
 MINLACOWIE NIKKI A08 (AI) (P)

CANNAWIGRA COMMANDER Z51 (S)  
 MOUNTAIN VALLEY GAMBLER G14 (P)  
 MOUNTAIN VALLEY B44 (P)

Purchaser: .....

Dam: **MOUNTAIN VALLEY SHAMROCK K207 (AI) (ET) (P)**  
 STRATHLEIGH TITANIC 34 (H)  
 MOUNTAIN VALLEY SHAMROCK C12 (AI) (P)  
 MOUNTAIN VALLEY SHAMROCK Z72 (AI) (P)

Price \$: .....

April 2022 Hereford BREEDPLAN														
GL	BW	200	400	600	MCW	Milk	SS	DC	Cwt	EMA	Rib	RUMP	RBY%	IMF%
+0.6	+5.9	+35	+56	+83	+79	+22	+1.5	-2.3	+51	+3.4	+0.6	+1.2	+0.4	+0.8
56%	65%	63%	63%	64%	57%	54%	63%	33%	55%	45%	52%	56%	48%	53%

Traits Observed: Genomics Parent Verification: Sire: Verified, Dam: Verified

Notes: Out of a top old cow. Twin brother sold to CA Hauff & Sons earlier this year in Blackall. Eye Pigment: 100/100



# Lot 21 MOUNTAIN VALLEY REFLEX R025 (AI) (PP)

Tattoo: R025

Rego No: SBDR025

Born: 22/07/2020

MELVILLE EXCEL E443 (P)

DAYS ELABORATE J59 (AI) (P)

DAYS CORA E38 (AI) (P)

Sire: **GRATHLYN HOLYFIELD N019 (AI) (P)**

CLOVERLEE HUNTER (PP)

GRATHLYN JEWESS L004 (AI) (PP)

GRATHLYN JEWESS H36 (P)

KOANUI ROCKET 0219 (IMP NZL) (P)

Purchaser: .....

MARKOWEN FEDERER (AI) (PP)

MARKOWEN DIANA D19 (AI) (P)

Dam: **MOUNTAIN VALLEY MATCHLESS L31 (P)**

GRASSMERE SPARK 555 (IMP NZL) (PP)

Price \$: .....

MOUNTAIN VALLEY H162 (AI) (ET) (P)

MOUNTAIN VALLEY MATCHLESS A23 (P)

April 2022 Hereford BREEDPLAN														
GL	BW	200	400	600	MCW	Milk	SS	DC	Cwt	EMA	Rib	RUMP	RBY%	IMF%
-2.0	+7.1	+52	+87	+122	+99	+20	+3.1	-3.0	+85	+7.2	+0.8	+1.1	+2.1	+0.8
58%	65%	64%	64%	66%	58%	49%	64%	33%	56%	46%	53%	57%	49%	54%

**Traits Observed:** Genomics **Parent Verification:** Sire: Verified, Dam: Not Tested

**Notes:** Big, long rugged bull. Heaps of bone and capacity. His dam is a brilliant cow! Homozygous Polled. Eye Pigment: 100/100

# Lot 22 MOUNTAIN VALLEY RAM R420 (AI) (ET) (H)

Tattoo: R420

Rego No: SBDR420

Born: 14/07/2020

KOANUI UNANIMOUS 7174 (P)

KOANUI UNANIMOUS 0408 (P)

KOANUI GIRLIE 3048 (P)

Sire: **KOANUI TECHNO 3062 (IMP NZL) (PP)**

LEELANDS X-TENSION 293 (P)

KOANUI BLUSH 6455 (P)

KOANUI BLUSH 3304 (P)

MINLACOWIE VALIANT NICK (AI) (ET) (P)

Purchaser: .....

MINLACOWIE XCITEMENT (P)

MINLACOWIE JOCELYN 202 (P)

Dam: **MINLACOWIE NIKKI C77 (AI) (P)**

PALLABAH TOPLINE P12 (P)

Price \$: .....

MINLACOWIE NIKKI A08 (AI) (P)

MINLACOWIE NIKKIE V109 (AI) (ET) (P)

April 2022 Hereford BREEDPLAN														
GL	BW	200	400	600	MCW	Milk	SS	DC	Cwt	EMA	Rib	RUMP	RBY%	IMF%
-0.4	+4.6	+29	+51	+78	+76	+25	+2.3	-3.2	+52	+4.2	+0.7	+0.6	+1.5	+0.7
68%	73%	72%	72%	73%	68%	66%	71%	48%	66%	59%	63%	66%	59%	64%

**Traits Observed:** Genomics **Parent Verification:** Sire: Verified, Dam: Verified

**Notes:** Horn bull with a great profile. Sires head, silky skin and very complete. Eye Pigment: 100/100

# Lot 23 MOUNTAIN VALLEY RAPID R415 (AI) (ET) (PP)

Tattoo: R415

Rego No: SBDR415

Born: 11/07/2020

ALLENDALE WATERHOUSE D1 (PP)

DAYS ROBIN HOOD H38 (AI) (ET) (PP)

ALLENDALE FANCY U5 (AI) (P)

Sire: **HUNTER LAKES LION HEART L110 (AI) (ET) (PP)**

SOUTH BUKALONG WALLACE 2 (P)

HUNTER LAKES FANCY F7 (AI) (P)

ALLENDALE FANCY D24 (AI) (P)

OTAPAWA SKYMATE 2046 (IMP NZL) (ET) (P)

Purchaser: .....

BRAYBOOK CHEROKEE C200 (AI) (P)

TYCOLAH DOMINETTE Y56 (P)

Dam: **BOWEN HARMONY F27 (P)**

MONREID YALE (H)

Price \$: .....

BOWEN HARMONY B279 (H)

MONREID HARMONY T523 (H)

April 2022 Hereford BREEDPLAN														
GL	BW	200	400	600	MCW	Milk	SS	DC	Cwt	EMA	Rib	RUMP	RBY%	IMF%
-1.9	+4.3	+33	+49	+64	+49	+15	+1.6	-3.9	+40	+4.5	+2.2	+3.7	-0.2	+1.7
60%	68%	67%	66%	68%	62%	56%	64%	35%	58%	48%	55%	59%	50%	55%

Traits Observed: Genomics Parent Verification: Sire: Verified, Dam: Verified

Notes: Super easy keeping bull as thick and deep as they come. Full brother to Lot 1. Homozygous Polled. Eye Pigment: 100/100

# Lot 24

Tattoo: SBDR324

# COMMERCIAL R324

Rego No: NOT REGISTERED

Born: September 2021

CASCADE EL DORADO E27 (P)

CASCADE HOCUS POCUS H145 (P)

CASCADE ADELAIDE Z167 (P)

Sire: **BOBANKEN KONRAD K13 (PP)**

LLANDILLO WARIALOA E152 (P)

BOBANKEN GLITTER H10 (P)

Purchaser: .....

BOBANKEN GLITTER E05 (P)

.....

Price \$: .....

Notes: Out of a grand old Tycolah Executive cow that's produced many top bulls. Softness with carcase and doability is a strength of this calf and his pedigree. Eye Pigment: 100/100

# Lot 25 MOUNTAIN VALLEY ROTTNEST R424 (AI) (ET) (P)

Tattoo: R424

Rego No: SBDR424

Born: 31/08/2020

STUDBROOK D'ARTAGNION V086 (AI) (ET) (S)  
OTAPAWA SPARK 3060 (IMP NZL) (AI) (ET) (P)  
OTAPAWA SPOT P30 (P)

Sire: MAILDABURRA JARRAH J2 (AI) (TW) (PP)

DEBARRY EDEN (PP)  
MAILDABURRA PURITY C2 (AI) (P)  
MAILDABURRA PURITY V59 (P)

MERAWAH FRONT PAGE C46 (PP)  
MERAWAH FRONT PAGE F66 (P)  
MERAWAH SHAMROCK B34 (AI) (ET) (P)

Dam: SEVENBARDOT CUPID K361 (PP)

SEVENBARDOT SPEED C66 (P)  
SEVENBARDOT CUPID F327 (P)  
SEVENBARDOT CUPID Z187 (P)

Purchaser: .....

Price \$: .....

April 2022 Hereford BREEDPLAN														
GL	BW	200	400	600	MCW	Milk	SS	DC	Cwt	EMA	Rib	RUMP	RBV%	IMF%
-1.6	+6.0	+38	+58	+82	+77	+17	+1.3	-2.1	+52	+2.8	+0.1	-0.4	+0.8	+0.0
55%	63%	62%	62%	62%	56%	54%	59%	36%	54%	45%	51%	55%	48%	53%

Traits Observed: Parent Verification: Sire: Not Tested, Dam: Not Tested

Notes: Another stout J2 calf with good muscle and great skin. Eye Pigment: 100/100

# Lot 26 MOUNTAIN VALLEY REDHEAD R423 (AI) (ET) (PP)

Tattoo: R423

Rego No: SBDR423

Born: 31/08/2020

STUDBROOK D'ARTAGNION V086 (AI) (ET) (S)  
OTAPAWA SPARK 3060 (IMP NZL) (AI) (ET) (P)  
OTAPAWA SPOT P30 (P)

Sire: MAILDABURRA JARRAH J2 (AI) (TW) (PP)

DEBARRY EDEN (PP)  
MAILDABURRA PURITY C2 (AI) (P)  
MAILDABURRA PURITY V59 (P)

MERAWAH FRONT PAGE C46 (PP)  
MERAWAH FRONT PAGE F66 (P)  
MERAWAH SHAMROCK B34 (AI) (ET) (P)

Dam: SEVENBARDOT CUPID K361 (PP)

SEVENBARDOT SPEED C66 (P)  
SEVENBARDOT CUPID F327 (P)  
SEVENBARDOT CUPID Z187 (P)

Purchaser: .....

Price \$: .....

April 2022 Hereford BREEDPLAN														
GL	BW	200	400	600	MCW	Milk	SS	DC	Cwt	EMA	Rib	RUMP	RBV%	IMF%
-0.8	+4.6	+35	+57	+82	+73	+20	+1.0	-2.4	+53	+2.8	+0.5	+0.5	+0.3	+0.6
58%	67%	66%	66%	66%	60%	56%	64%	37%	58%	47%	54%	58%	50%	56%

Traits Observed: Genomics Parent Verification: Sire: Verified, Dam: Verified

Notes: Full ET Brother to previous lot. He's got that skin we like wrapped around plenty of red meat. Homozygous Polled. Eye Pigment: 100/100

# Lot 27 MOUNTAIN VALLEY REBATE R098 (PP)

Tattoo: R098

Rego No: SBDR098

Born: 11/09/2020

KIDMAN DICTATOR F115 (P)  
KIDMAN ADVANCER J312 (PP)  
KIDMAN ADVANCE B221 (AI) (P)  
Sire: **CASCADE MAXI CDEM071 (P)**  
CASCADE EL DORADO E27 (P)  
CASCADE PETUNIA G202 (P)  
DEBARRY PETUNIA B216 (P)  
CANNAWIGRA S5 BATMAN X08 (AI) (ET) (S)  
CANNAWIGRA COMMANDER Z51 (S)  
CANNAWIGRA ANABEL V108 (P)

Dam: **MOUNTAIN VALLEY FIESTA G9 (P)**  
NEWSOME WONKA (P)  
MOUNTAIN VALLEY FIESTA A6 (P)  
NEWSOME S32 FIESTA X201 (P)

Purchaser: .....

Price \$: .....

April 2022 Hereford BREEDPLAN														
GL	BW	200	400	600	MCW	Milk	SS	DC	Cwt	EMA	Rib	RUMP	RBY%	IMF%
+0.6	+5.6	+35	+56	+80	+65	+15	-0.1	+0.8	+49	+4.6	+0.8	+1.2	+1.0	+1.0
53%	64%	62%	62%	64%	56%	50%	64%	32%	54%	45%	51%	55%	47%	51%

Traits Observed: Genomics Parent Verification: Sire: Verified, Dam: Not Tested

Notes: Very attractive, well balanced calf with that extra bit of style. A smooth fronted calf that would suit heifers. Homozygous Polled. Eye Pigment: 100/100

# Lot 28 MOUNTAIN VALLEY ROGUE R120 (PP)

Tattoo: R120

Rego No: SBDR120

Born: 30/09/2020

ALLENDALE ANZAC E114 (PP)  
INJEMIRA ANZAC H006 (PP)  
INJEMIRA MARINDA B028 (AI) (P)  
Sire: **INJEMIRA ANZAC H006 M187 AI (AI) (PP)**  
DEBARRY RUGGERO (S)  
INJEMIRA PLUM E212 (P)  
BURANDO Y2 PLUM 39 (P)  
CAPETHORNE HOT SHOT 03 22 (P)  
MATARIKI HOLY - SMOKE (IMP NZL) (P)  
MATARIKI GIRLIE 00323 (P)

Dam: **MOUNTAIN VALLEY GLITTER P336 (AI) (ET) (P)**  
MOUNTAIN VALLEY OOZY Y45 (P)  
MOUNTAIN VALLEY B44 (P)  
MOUNTAIN VALLEY GLITTER Y79 (AI) (P)

Purchaser: .....

Price \$: .....

April 2022 Hereford BREEDPLAN														
GL	BW	200	400	600	MCW	Milk	SS	DC	Cwt	EMA	Rib	RUMP	RBY%	IMF%
+1.0	+2.9	+28	+52	+63	+52	+15	+1.6	-3.0	+46	+6.0	+1.6	+2.2	+0.7	+0.9
60%	66%	64%	64%	65%	59%	54%	65%	37%	57%	48%	54%	57%	50%	55%

Traits Observed: Genomics Parent Verification: Sire: Verified, Dam: Not Tested

Notes: Younger bull with our trademark skin! Great depth, a real soggy type. Suitable for heifers. Homozygous Polled. Eye Pigment: 100/100



# Lot 29 MOUNTAIN VALLEY RAMBO R409 (AI) (ET) (PP)

Tattoo: R409

Rego No: SBDR409

Born: 08/09/2020

KOANUI UNANIMOUS 0408 (P)

KOANUI TECHNO 3062 (IMP NZL) (PP)

KOANUI BLUSH 6455 (P)

Sire: **INJEMIRA TECHNO N276 (AI) (PP)**

ALLENDALE ANZAC E114 (PP)

INJEMIRA PRUDENCE AI J182 (AI) (P)

INJEMIRA PRUDENCE F009 T (TW) (P)

MERAWAH FRONT PAGE C46 (PP)

Purchaser: .....

MERAWAH FRONT PAGE F66 (P)

MERAWAH SHAMROCK B34 (AI) (ET) (P)

Dam: **SEVENBARDOT CUPID K361 (PP)**

SEVENBARDOT SPEED C66 (P)

Price \$: .....

SEVENBARDOT CUPID F327 (P)

SEVENBARDOT CUPID Z187 (P)

April 2022 Hereford BREEDPLAN														
GL	BW	200	400	600	MCW	Milk	SS	DC	Cwt	EMA	Rib	RUMP	RBY%	IMF%
+0.9	+6.0	+35	+59	+82	+81	+21	+1.7	-1.3	+48	+3.2	+0.1	-0.3	+0.7	+0.5
60%	66%	64%	64%	65%	57%	47%	63%	34%	55%	45%	52%	56%	47%	53%

Traits Observed: Genomics Parent Verification: Sire: Verified, Dam: Verified

Notes: By the high performance sire in Injemira Techno. A really well structured calf that is well balanced and super quiet. Homozygous Polled. Eye Pigment: 100/100

# Lot 30 MOUNTAIN VALLEY REALITY R117 (PP)

Tattoo: R117

Rego No: SBDR117

Born: 27/09/2020

ALLENDALE ANZAC E114 (PP)

INJEMIRA ANZAC H006 (PP)

INJEMIRA MARINDA B028 (AI) (P)

Sire: **INJEMIRA ANZAC H006 M187 AI (AI) (PP)**

DEBARRY RUGGERO (S)

INJEMIRA PLUM E212 (P)

BURANDO Y2 PLUM 39 (P)

CANNAWIGRA COMMANDER Z51 (S)

Purchaser: .....

MOUNTAIN VALLEY GAMBLER G14 (P)

MOUNTAIN VALLEY B44 (P)

Dam: **MOUNTAIN VALLEY PAGON P029 (P)**

ALLENDALE DISTINGUISHED H52 (AI) (PP)

Price \$: .....

MOUNTAIN VALLEY PAGON L81 (P)

MOUNTAIN VALLEY PAGON Z40 (P)

April 2022 Hereford BREEDPLAN														
GL	BW	200	400	600	MCW	Milk	SS	DC	Cwt	EMA	Rib	RUMP	RBY%	IMF%
-0.7	+5.9	+43	+78	+106	+101	+16	+2.6	-3.0	+74	+6.5	+0.1	+0.0	+2.3	+0.4
60%	65%	64%	63%	65%	58%	51%	64%	33%	55%	46%	52%	56%	48%	53%

Traits Observed: Genomics Parent Verification: Sire: Verified, Dam: Not Tested

Notes: Googled eyed, Strong head, Well made, Only a baby, Heifer approved, Homozygous Polled. Eye Pigment: 100/100

# Lot 31 MOUNTAIN VALLEY RAFFLE R044 (PP)

Tattoo: R044

Rego No: SBDR044

Born: 06/08/2020

CASCADE EL DORADO E27 (P)  
CASCADE HOCUS POCUS H145 (P)  
CASCADE ADELAIDE Z167 (P)

Sire: **BOBANKEN KONRAD K13 (PP)**  
LLANDILLO WARIALOA E152 (P)  
BOBANKEN GLITTER H10 (P)  
BOBANKEN GLITTER E05 (P)

VALMA MERCHANT (AI) (P)  
YAVENVALE GURU G031 (PP)  
YAVENVALE TREASURE D403 (P)

Dam: **MOUNTAIN VALLEY PAGON K079 (AI) (ET) (P)**  
BOBANKEN WARRIGAL W175 (P)  
MOUNTAIN VALLEY PAGON Z40 (P)  
MOUNTAIN VALLEY PAGON W30 (P)

Purchaser: .....

Price \$: .....

April 2022 Hereford BREEDPLAN														
GL	BW	200	400	600	MCW	Milk	SS	DC	Cwt	EMA	Rib	RUMP	RBY%	IMF%
-0.6	+3.7	+29	+51	+67	+56	+13	+1.4	-0.3	+44	+4.0	+0.6	+0.9	+0.9	+0.5
54%	67%	64%	63%	65%	57%	51%	64%	32%	55%	44%	51%	55%	46%	52%

Traits Observed: Genomics Parent Verification: Sire: Verified, Dam: Not Tested

Notes: Soft, deep sided calf with excellent spring of rib. Homozygous Polled. Eye Pigment: 100/100

# Lot 32 MOUNTAIN VALLEY ROPER R404 (AI) (ET) (PP)

Tattoo: R404

Rego No: SBDR404

Born: 04/08/2020

KOANUI UNANIMOUS 0408 (P)  
KOANUI TECHNO 3062 (IMP NZL) (PP)  
KOANUI BLUSH 6455 (P)

Sire: **INJEMIRA TECHNO N276 (AI) (PP)**  
ALLENDALE ANZAC E114 (PP)  
INJEMIRA PRUDENCE AI J182 (AI) (P)  
INJEMIRA PRUDENCE F009 T (TW) (P)

MERAWAH FRONT PAGE C46 (PP)  
MERAWAH FRONT PAGE F66 (P)  
MERAWAH SHAMROCK B34 (AI) (ET) (P)

Dam: **SEVENBARDOT CUPID K361 (PP)**  
SEVENBARDOT SPEED C66 (P)  
SEVENBARDOT CUPID F327 (P)  
SEVENBARDOT CUPID Z187 (P)

Purchaser: .....

Price \$: .....

April 2022 Hereford BREEDPLAN														
GL	BW	200	400	600	MCW	Milk	SS	DC	Cwt	EMA	Rib	RUMP	RBY%	IMF%
+2.2	+6.1	+34	+59	+81	+82	+18	+1.1	-0.2	+49	+3.7	-0.4	-1.1	+1.5	-0.1
60%	66%	64%	64%	66%	58%	48%	63%	35%	56%	45%	53%	57%	48%	54%

Traits Observed: Genomics Parent Verification: Sire: Verified, Dam: Verified

Notes: A real ball of muscle. Thick, stout and soft. Early maturing pattern with a great pedigree. Homozygous Polled. Eye Pigment: 100/100

# Lot 33 MOUNTAIN VALLEY REX R113 (PP)

Tattoo: R113

Rego No: SBDR113

Born: 24/09/2020

ALLENDALE ANZAC E114 (PP)

INJEMIRA ANZAC H006 (PP)

INJEMIRA MARINDA B028 (AI) (P)

Sire: **INJEMIRA ANZAC H006 M187 AI (AI) (PP)**

DEBARRY RUGGERO (S)

INJEMIRA PLUM E212 (P)

BURANDO Y2 PLUM 39 (P)

INJEMIRA ANZAC H003 (P)

Purchaser: .....

RAYLEIGH LANCEALOT L60 (P)

RAYLEIGH L BELLA H81 (P)

Dam: **MOUNTAIN VALLEY SHAMROCK P049 (P)**

MOUNTAIN VALLEY GAMBLER G14 (P)

Price \$: .....

MOUNTAIN VALLEY SHAMROCK K207 (AI) (ET) (P)

MOUNTAIN VALLEY SHAMROCK C12 (AI) (P)

April 2022 Hereford BREEDPLAN														
GL	BW	200	400	600	MCW	Milk	SS	DC	Cwt	EMA	Rib	RUMP	RBY%	IMF%
-1.5	+7.2	+44	+77	+110	+102	+20	+1.7	-2.1	+74	+6.3	+0.3	+0.3	+2.1	+0.2
58%	65%	63%	63%	64%	57%	50%	64%	33%	55%	44%	52%	55%	47%	53%

**Traits Observed:** Genomics **Parent Verification:** Sire: Verified, Dam: Not Tested

**Notes:** Bloody good calf that we haven't seen the best of. Tremendous growth with style, balance and outlook. A younger bull that we have a lot of time for. Homozygous Polled. Eye Pigment: 100/100

# Lot 34 MOUNTAIN VALLEY RAVINE R091 (P)

Tattoo: R091

Rego No: SBDR091

Born: 02/09/2020

KIDMAN DICTATOR F115 (P)

KIDMAN ADVANCER J312 (PP)

KIDMAN ADVANCE B221 (AI) (P)

Sire: **CASCADE MAXI CDEM071 (P)**

CASCADE EL DORADO E27 (P)

CASCADE PETUNIA G202 (P)

DEBARRY PETUNIA B216 (P)

WEETALIBA PROFILER 2 A8 (AI) (P)

Purchaser: .....

YUKON PARK PROFILER F520 (PP)

DENISON DECIMA X124 (P)

Dam: **MOUNTAIN VALLEY MATCHLESS K35 (P)**

WLB SHAPLEY 50S 40U (IMP CAN) (P)

Price \$: .....

MOUNTAIN VALLEY MATCHLESS F32 (AI) (P)

MOUNTAIN VALLEY MATCHLESS B41 (P)

April 2022 Hereford BREEDPLAN														
GL	BW	200	400	600	MCW	Milk	SS	DC	Cwt	EMA	Rib	RUMP	RBY%	IMF%
+0.7	+9.0	+50	+75	+109	+101	+18	+1.1	-0.1	+63	+3.9	-0.3	-0.6	+1.8	-0.2
50%	64%	60%	59%	61%	53%	45%	61%	28%	51%	41%	47%	51%	43%	47%

**Traits Observed:** Genomics **Parent Verification:** Sire: Verified, Dam: Not Tested

**Notes:** Very very good bull. Terrific length and great structure. Growth and performance in spades. Eye Pigment: 100/0

# Lot 35 MOUNTAIN VALLEY RAGE R036 (AI) (P)

Tattoo: R036

Rego No: SBDR036

Born: 01/08/2020

MATARIKI DUNSTAN (P)

MONYMUSK GALLANT 110089 (IMP NZL) (P)

MONYMUSK DOROTHY 070083 (P)

Sire: **GRASSMERE GALLANT 996 (P)**

MATARIKI HEMINGWAY (P)

GRASSMERE PRINCESS 647 (SBM) (P)

GRASSMERE PRINCESS 535 (SBM) (P)

SOUTH BUKALONG WALLACE 2 (P)

Purchaser: .....

MOUNTAIN VALLEY BUKALONG K128 (AI) (ET) (S)

MOUNTAIN VALLEY ADVANCE A110 (P)

Dam: **MOUNTAIN VALLEY SHAMROCK M032 (P)**

MOUNTAIN VALLEY GAMBLER G14 (P)

Price \$: .....

MOUNTAIN VALLEY SHAMROCK K212 (AI) (ET) (P)

MOUNTAIN VALLEY SHAMROCK C12 (AI) (P)

April 2022 Hereford BREEDPLAN														
GL	BW	200	400	600	MCW	Milk	SS	DC	Cwt	EMA	Rib	RUMP	RBY%	IMF%
+0.4	+6.7	+39	+67	+95	+90	+17	+3.7	-1.0	+58	+4.2	-0.2	-0.8	+1.9	+0.2
58%	68%	65%	65%	66%	58%	54%	64%	34%	57%	47%	53%	57%	49%	55%

Traits Observed: Genomics Parent Verification: Sire: Verified, Dam: Not Tested

Notes: Big dark bull with power and bone! A well muscled bull with exceptional length. Eye Pigment: 100/100

# Lot 36 MOUNTAIN VALLEY RANDOM R087 (PP)

Tattoo: R087

Rego No: SBDR087

Born: 02/09/2020

CASCADE EL DORADO E27 (P)

CASCADE HOCUS POCUS H145 (P)

CASCADE ADELAIDE Z167 (P)

Sire: **BOBANKEN KONRAD K13 (PP)**

LLANDILLO WARIALOA E152 (P)

BOBANKEN GLITTER H10 (P)

BOBANKEN GLITTER E05 (P)

ALLENDAL E KENWORTH 2 (P)

Purchaser: .....

TYCOLAH EXECUTIVE (P)

TYCOLAH COUNTESS W110 (P)

Dam: **MOUNTAIN VALLEY MAYFLOWER F15 (P)**

BOBANKEN X-MARK X157 (P)

Price \$: .....

MOUNTAIN VALLEY MAYFLOWER C34 (TW) (P)

MOUNTAIN VALLEY MAYFLOWER U9 (AI) (P)

April 2022 Hereford BREEDPLAN														
GL	BW	200	400	600	MCW	Milk	SS	DC	Cwt	EMA	Rib	RUMP	RBY%	IMF%
-0.6	+6.8	+42	+67	+98	+92	+17	+2.5	-0.8	+60	+4.4	+0.0	-0.1	+1.2	+1.0
53%	66%	62%	61%	63%	55%	50%	63%	29%	52%	42%	49%	53%	44%	49%

Traits Observed: Genomics Parent Verification: Sire: Verified, Dam: Not Verified

Notes: Loads of growth here. His mum is still in the herd at 12yrs and has raised some of our best! Homozygous Polled. Eye Pigment: 100/100



# Lot 37 MOUNTAIN VALLEY RED R106 (PP)

Tattoo: R106

Rego No: SBD R106

Born: 19/09/2020

CASCADE EL DORADO E27 (P)  
CASCADE HOCUS POCUS H145 (P)  
CASCADE ADELAIDE Z167 (P)

Sire: **BOBANKEN KONRAD K13 (PP)**  
LLANDILLO WARIALOA E152 (P)  
BOBANKEN GLITTER H10 (P)  
BOBANKEN GLITTER E05 (P)

BINBARRA WARBOYS (AI) (S)  
MOUNTAIN VALLEY EXTRA E88 (P)  
MOUNTAIN VALLEY PRUDENCE T27 (AI) (P)

Dam: **MOUNTAIN VALLEY GLITTER H13 (P)**  
MOUNTAIN VALLEY QUICKSTIX A71 (P)  
MOUNTAIN VALLEY GLITTER E66 (P)  
MOUNTAIN VALLEY GLITTER Y51 (P)

Purchaser: .....

Price \$: .....

April 2022 Hereford BREEDPLAN														
GL	BW	200	400	600	MCW	Milk	SS	DC	Cwt	EMA	Rib	RUMP	RBY%	IMF%
+0.3	+6.5	+35	+53	+79	+71	+12	+0.9	+0.3	+43	+3.2	+0.4	+0.7	+0.4	+0.8
49%	65%	61%	61%	63%	54%	47%	62%	27%	51%	40%	47%	51%	43%	47%

Traits Observed: Genomics Parent Verification: Sire: Verified, Dam: Not Tested

Notes: A big, strong bull with loads of stretch. A bull that will go on. Homozygous Polled. Eye Pigment: 100/5

# Lot 38 MOUNTAIN VALLEY RUDY R078 (PP)

Tattoo: R078

Rego No: SBD R078

Born: 01/09/2020

ALLENDAL E ANZAC E114 (PP)  
ALLENDAL COLLINGWOOD J29 (AI) (PP)  
ALLENDAL BLUE MIST E13 (P)

Sire: **MOUNTAIN VALLEY NARACOORTE N085 (PP)**  
TYCOLAH EXECUTIVE (P)  
MOUNTAIN VALLEY MAYFLOWER F15 (P)  
MOUNTAIN VALLEY MAYFLOWER C34 (TW) (P)

ALLENDAL WATERHOUSE D1 (PP)  
ALLENDAL DISTINGUISHED H52 (AI) (PP)  
ALLENDAL MARSHALL LASS E116 (P)

Dam: **MOUNTAIN VALLEY PRUDENCE M141 (P)**  
CANNAWIGRA COMMANDER Z51 (S)  
MOUNTAIN VALLEY PRUDENCE J56 (P)  
MOUNTAIN VALLEY PRUDENCE A115 (P)

Purchaser: .....

Price \$: .....

April 2022 Hereford BREEDPLAN														
GL	BW	200	400	600	MCW	Milk	SS	DC	Cwt	EMA	Rib	RUMP	RBY%	IMF%
-0.7	+8.1	+41	+62	+93	+94	+8	+2.8	-1.6	+52	+4.7	+0.2	+0.4	+0.8	+0.8
53%	62%	60%	60%	61%	54%	47%	62%	31%	51%	41%	48%	52%	44%	49%

Traits Observed: Genomics Parent Verification: Sire: Verified, Dam: Not Tested

Notes: Strong head and overall balance. Good skin, strong top and soundly made. Homozygous Polled. Eye Pigment: 100/100

# Lot 39 MOUNTAIN VALLEY RASTUS R005 (PP)

Tattoo: R005

Rego No: SBDR005

Born: 26/05/2020

ALLENDALE ANZAC E114 (PP)

INJEMIRA ANZAC H006 (PP)

INJEMIRA MARINDA B028 (AI) (P)

Sire: **INJEMIRA ANZAC H006 M187 AI (AI) (PP)**

DEBARRY RUGGERO (S)

INJEMIRA PLUM E212 (P)

BURANDO Y2 PLUM 39 (P)

GUILFORD GLIMMER G69 (P)

Purchaser: .....

LACHANORA KICKSTART K7 (P)

MUNDOOK SILVER Q D039 (AI) (H)

Dam: **MOUNTAIN VALLEY MATC N058 (AI) (ET) (P)**

BOBANKEN X-MARK X157 (P)

MOUNTAIN VALLEY MATCHLESS A23 (P)

MOUNTAIN VALLEY MATCHLESS W27 (P)

Price \$: .....

April 2022 Hereford BREEDPLAN														
GL	BW	200	400	600	MCW	Milk	SS	DC	Cwt	EMA	Rib	RUMP	RBY%	IMF%
-1.9	+3.7	+31	+51	+69	+50	+22	+2.0	-3.0	+50	+6.3	+1.3	+1.8	+1.7	+0.6
56%	65%	62%	62%	63%	56%	48%	63%	32%	54%	44%	50%	54%	46%	51%

Traits Observed: Genomics Parent Verification: Sire: Verified, Dam: Not Tested

Notes: Heifers first calf and she NAILED IT! Really attractive bull with tremendous muscle and softness. Good bull. Homozygous Polled. Eye Pigment: 100/100

# Lot 40 MOUNTAIN VALLEY REG R164 (PP)

Tattoo: R164

Rego No: SBDR164

Born: 23/04/2020

ALLENDALE ANZAC E114 (PP)

INJEMIRA ANZAC H006 (PP)

INJEMIRA MARINDA B028 (AI) (P)

Sire: **INJEMIRA ANZAC H006 M187 AI (AI) (PP)**

DEBARRY RUGGERO (S)

INJEMIRA PLUM E212 (P)

BURANDO Y2 PLUM 39 (P)

GUILFORD GLIMMER G69 (P)

Purchaser: .....

LACHANORA KICKSTART K7 (P)

MUNDOOK SILVER Q D039 (AI) (H)

Dam: **MOUNTAIN VALLEY LADY N143 (P)**

BOWEN STU-GRADON W404 (S)

MOUNTAIN VALLEY LADY C20 (AI) (P)

MOUNTAIN VALLEY LADY Z41 (AI) (ET) (P)

Price \$: .....

April 2022 Hereford BREEDPLAN														
GL	BW	200	400	600	MCW	Milk	SS	DC	Cwt	EMA	Rib	RUMP	RBY%	IMF%
-0.1	+6.2	+42	+68	+95	+90	+19	+1.7	-0.7	+64	+5.3	+0.3	+0.4	+1.4	+0.2
57%	64%	62%	61%	63%	55%	48%	62%	31%	53%	43%	50%	54%	45%	51%

Traits Observed: Genomics Parent Verification: Sire: Verified, Dam: Not Tested

Notes: This is a proper impressive bull!! Just have a look over the top of this bloke. Length and muscle. He is a very well balanced bull, thick topped and very deep. 3 ticks. Homozygous Polled. Eye Pigment: 100/100

# Lot 41 MOUNTAIN VALLEY RISE R166 (PP)

Tattoo: R166

Rego No: SBDR166

Born: 25/03/2020

ALLENDALE ANZAC E114 (PP)  
 INJEMIRA ANZAC H006 (PP)  
 INJEMIRA MARINDA B028 (AI) (P)  
 Sire: **INJEMIRA ANZAC H006 M187 AI (AI) (PP)**  
 DEBARRY RUGGERO (S)  
 INJEMIRA PLUM E212 (P)  
 BURANDO Y2 PLUM 39 (P)  
 DAYS CALIBRE G74 (PP)  
 MOUNTAIN VALLEY KAPUTAR K52 (AI) (P)  
 MOUNTAIN VALLEY MATCHLESS A23 (P)

Dam: **MOUNTAIN VALLEY MAGIC N053 (P)**  
 MERAWAH NORTH WEST A12 (ET) (P)  
 MERAWAH MAGIC C87 (P)  
 AMOR MAGIC Y41 (P)

Purchaser: .....

Price \$: .....

April 2022 Hereford BREEDPLAN														
GL	BW	200	400	600	MCW	Milk	SS	DC	Cwt	EMA	Rib	RUMP	RBY%	IMF%
-0.2	+6.8	+38	+62	+86	+85	+14	+1.6	-1.6	+55	+5.4	+0.3	+0.0	+2.1	+0.0
58%	65%	62%	61%	63%	56%	49%	62%	32%	53%	43%	50%	54%	46%	51%

Traits Observed: Genomics Parent Verification: Sire: Verified, Dam: Not Tested

Notes: Old M187 stamps em out cookie cutter style! They have punch and shape with balance and bone.  
 Homozygous Polled. Eye Pigment: 100/100

# Lot 42 MOUNTAIN VALLEY RANCH R161 (PP)

Tattoo: R161

Rego No: SBDR161

Born: 01/04/2020

ALLENDALE ANZAC E114 (PP)  
 INJEMIRA ANZAC H006 (PP)  
 INJEMIRA MARINDA B028 (AI) (P)  
 Sire: **INJEMIRA ANZAC H006 M187 AI (AI) (PP)**  
 DEBARRY RUGGERO (S)  
 INJEMIRA PLUM E212 (P)  
 BURANDO Y2 PLUM 39 (P)

GUILFORD GLIMMER G69 (P)  
 LACHANORA KICKSTART K7 (P)  
 MUNDOOK SILVER Q D039 (AI) (H)  
 Dam: **MOUNTAIN VALLEY MATCHLESS N074 (P)**  
 CANNAWIGRA COMMANDER Z51 (S)  
 MOUNTAIN VALLEY MATCHLESS J113 (P)  
 MOUNTAIN VALLEY MATCHLESS D84 (P)

Purchaser: .....

Price \$: .....

April 2022 Hereford BREEDPLAN														
GL	BW	200	400	600	MCW	Milk	SS	DC	Cwt	EMA	Rib	RUMP	RBY%	IMF%
+1.1	+4.5	+37	+61	+85	+80	+11	+1.6	-2.5	+59	+5.4	+0.2	+0.1	+1.8	+0.3
56%	65%	62%	61%	62%	55%	48%	62%	31%	53%	43%	49%	53%	45%	50%

Traits Observed: Genomics Parent Verification: Sire: Verified, Dam: Not Tested

Notes: So similar to the last bull it's almost like "see comments to previous lot"! Good bull. Homozygous Polled.  
 Eye Pigment: 100/100

# Lot 43 MOUNTAIN VALLEY RANZAC R059 (S)

Tattoo: R059

Rego No: SBDR059

Born: 19/04/2020

ALLENDALE ANZAC E114 (PP)  
 INJEMIRA ANZAC H006 (PP)  
 INJEMIRA MARINDA B028 (AI) (P)  
 Sire: **INJEMIRA ANZAC H006 M187 AI (AI) (PP)**  
 DEBARRY RUGGERO (S)  
 INJEMIRA PLUM E212 (P)  
 BURANDO Y2 PLUM 39 (P)

CANNAWIGRA S5 BATMAN X08 (AI) (ET) (S)  
 CANNAWIGRA COMMANDER Z51 (S)  
 CANNAWIGRA ANABEL V108 (P)

Purchaser: .....

Dam: **MOUNTAIN VALLEY PAGON N047 (AI) (ET) (P)**  
 MOUNTAIN VALLEY ROCKYNED B1 (P)  
 MOUNTAIN VALLEY PAGON E29 (AI) (P)  
 MOUNTAIN VALLEY PAGON Z38 (P)

Price \$: .....

Hereford Mating Predictor based EBVs														
GL	BW	200	400	600	MCW	Milk	SS	DC	Cwt	EMA	Rib	RUMP	RBY%	IMF%
0.0	+4.2	+35	+57	+76	+65	+21	+1.3	-2.5	+55	+5.7	+0.5	+0.5	+1.8	+0.4

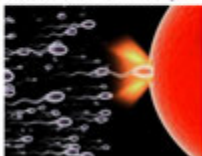
Traits Observed: Parent Verification: Sire: Not Tested, Dam: Not Tested

Notes: A real carcase bull to finish off with. Great skin and well made. Attractive with great cosmetics. Eye Pigment: 100/100



## FOR ALL YOUR ARTIFICIAL BREEDING NEEDS

Artificial Insemination    Ultrasound Preg Testing    Semen Collection    Semen & Embryo Storage    Ear Tags    Supplements



[www.northernab.com.au](http://www.northernab.com.au)

[brendan@northernab.com.au](mailto:brendan@northernab.com.au)

02 6545 2465

0427 417 148



# **C.L. SQUIRES**

**& CO.**  
**67222 588**

---

**STOCK • PROPERTY • REAL ESTATE AGENTS**

---

**3/137 Byron Street**  
**P O Box 355, Inverell 2360**  
**Phone (02) 6722 2588**

**[www.clsquires.com.au](http://www.clsquires.com.au)**  
**[admin@clsquires.com.au](mailto:admin@clsquires.com.au)**

**Terry Pyne 0447 231411**  
**Tom Oakes 0409 901930**  
**Robbie Bloch 0409 191229**  
**Phil Hurford 0428 233260**  
**Will Claridge 0428 236930**





*Australia's Livestock Marketplace*

**Can't make the sale?**

**Log onto AuctionsPlus to bid from  
anywhere on your phone, tablet or desktop.**

**Contact AuctionsPlus on (02) 9262 4222  
or [www.auctionsplus.com.au](http://www.auctionsplus.com.au)**

**Nutrien**  
Ag Solutions®

**We are your  
trusted  
livestock  
partner.**



# Boost Livestock performance

with Anipro Liquid Supplements.



**Anipro**  
Liquid Supplements

Customised nutrition  
supplements delivered  
straight to your paddock

Improving results in livestock systems requires year-round nutrition planning. Anipro is a molasses-based liquid supplement that complements the forage you have available to optimise health and condition and therefore boost production, performance and profitability in your herd.

#### KEY BENEFITS

- ✓ Molasses based liquid supplement
- ✓ Provides essential protein, minerals and vitamins
- ✓ Up to 27% improvement in forage intake
- ✓ Fully serviced program saves time and money
- ✓ Promotes improved digestibility in dry feeds, hays, and stubbles

Call Coolatai Rural Supplies 0421 790 582  
Servicing Upper Hunter & North West NSW  
[performancefeeds.com.au](http://performancefeeds.com.au)

 **PERFORMANCE  
FEEDS**

259 BYRON ST - INVERELL, NSW 2360 - 02 67210610



OVER 40 YEARS OF SALES & SERVICE TO THE MOTORCYCLE INDUSTRY

